

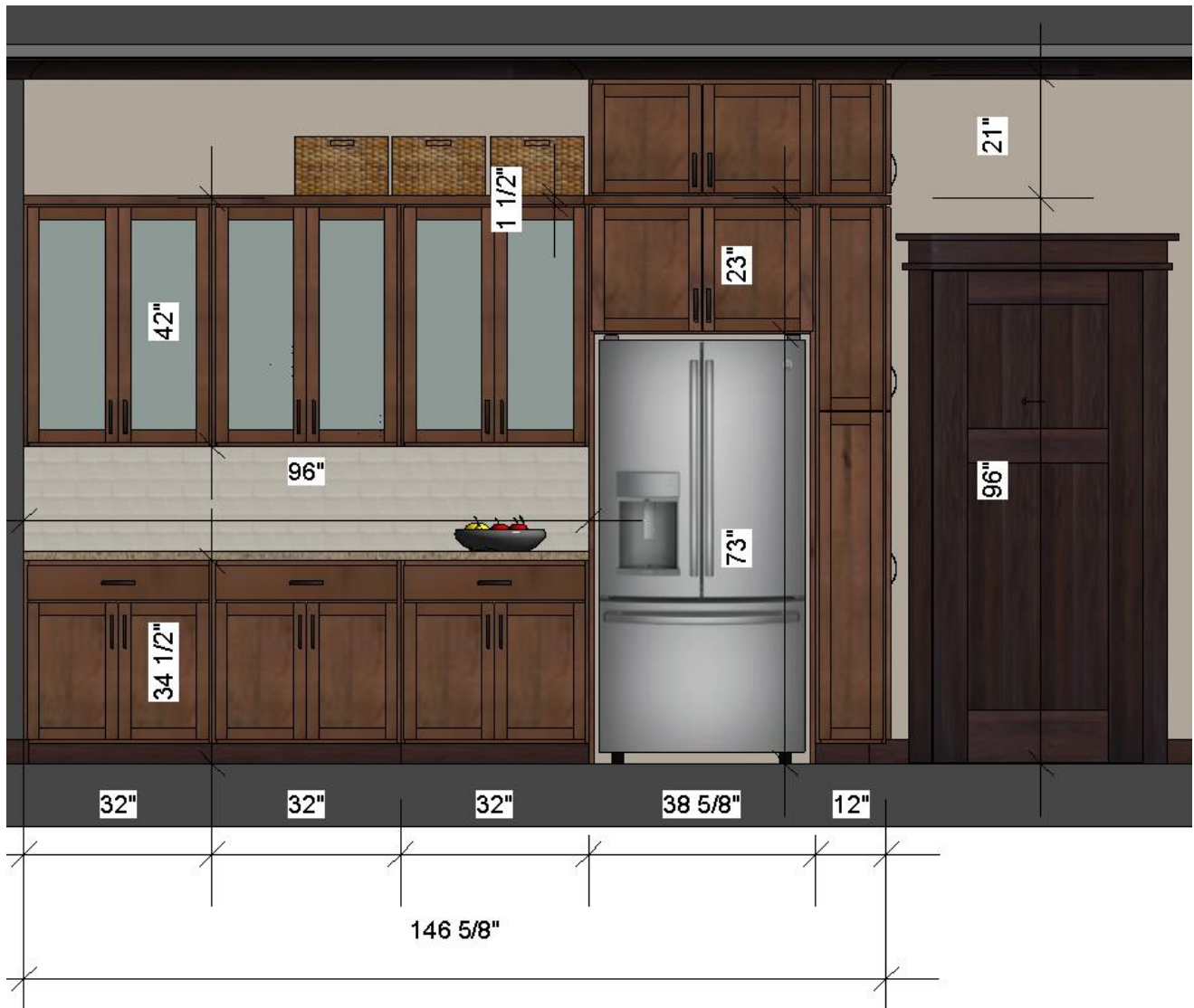
Kitchen Cabinets Design Specification



October 30, 2019

Beth Hodgman

Refrigerator Wall



Cabinets

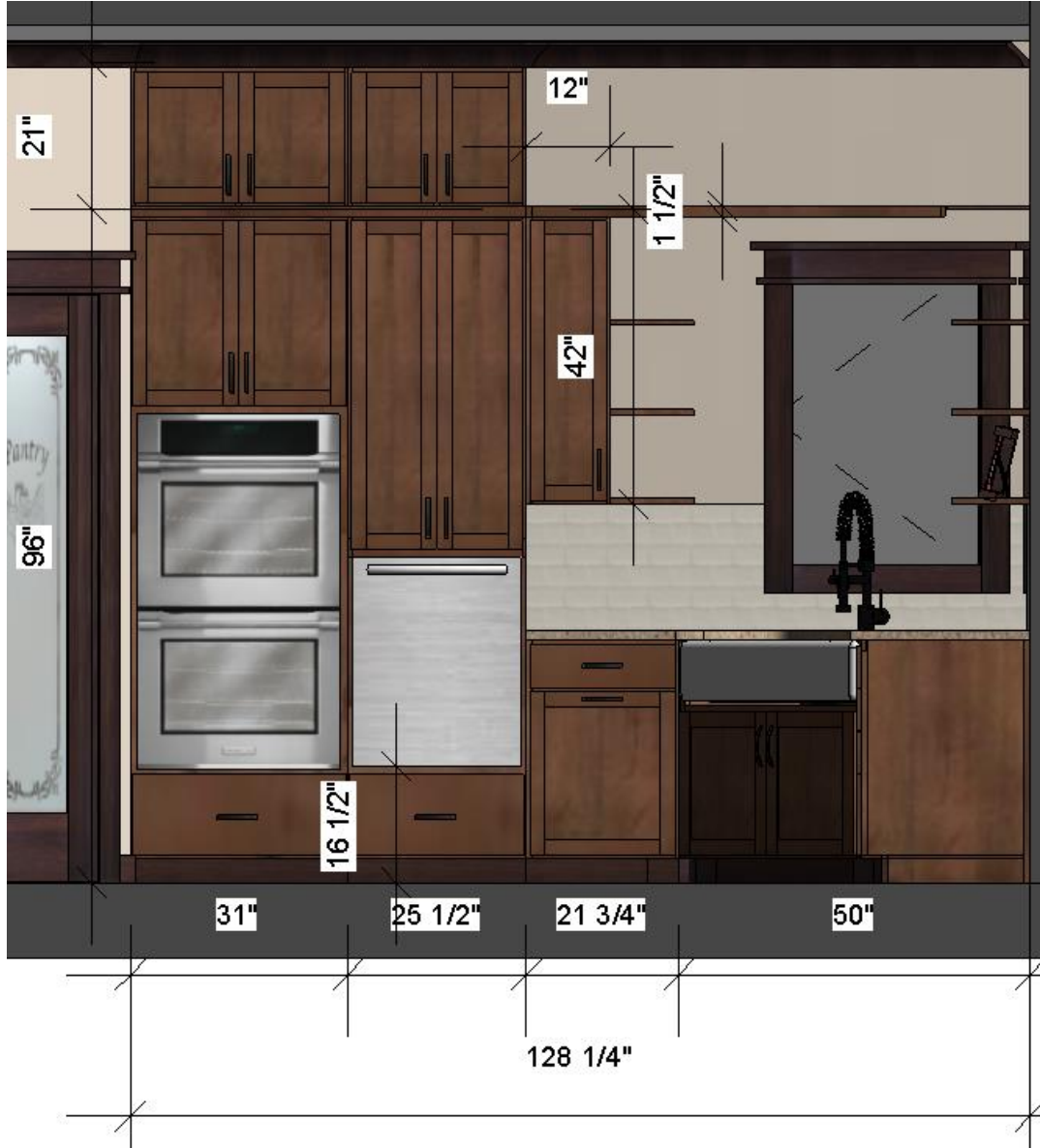
- Three lower cabinets, with pull-out shelves – 32" W x 34.5" H x 24" D
- Three upper cabinets, with glass door panels – 32" W x 42" H x 12" D
- Refrigerator sidewalls and cabinet with pull-out – 38 5/8" W x 23" H x 30" D
- Cabinet over refrigerator – 38 5/8" W x 21" H x 30" D
- Broom Closet – 30" W x 96" H x 12" D
- Cabinet over broom closet – 30" W x 21" H x 12" D

1 1/2" trim piece at 8' height to hide seam between cabinets

Crown molding at top of walls and around cabinets

Beth Hodgman

Double Ovens and Dishwasher Wall



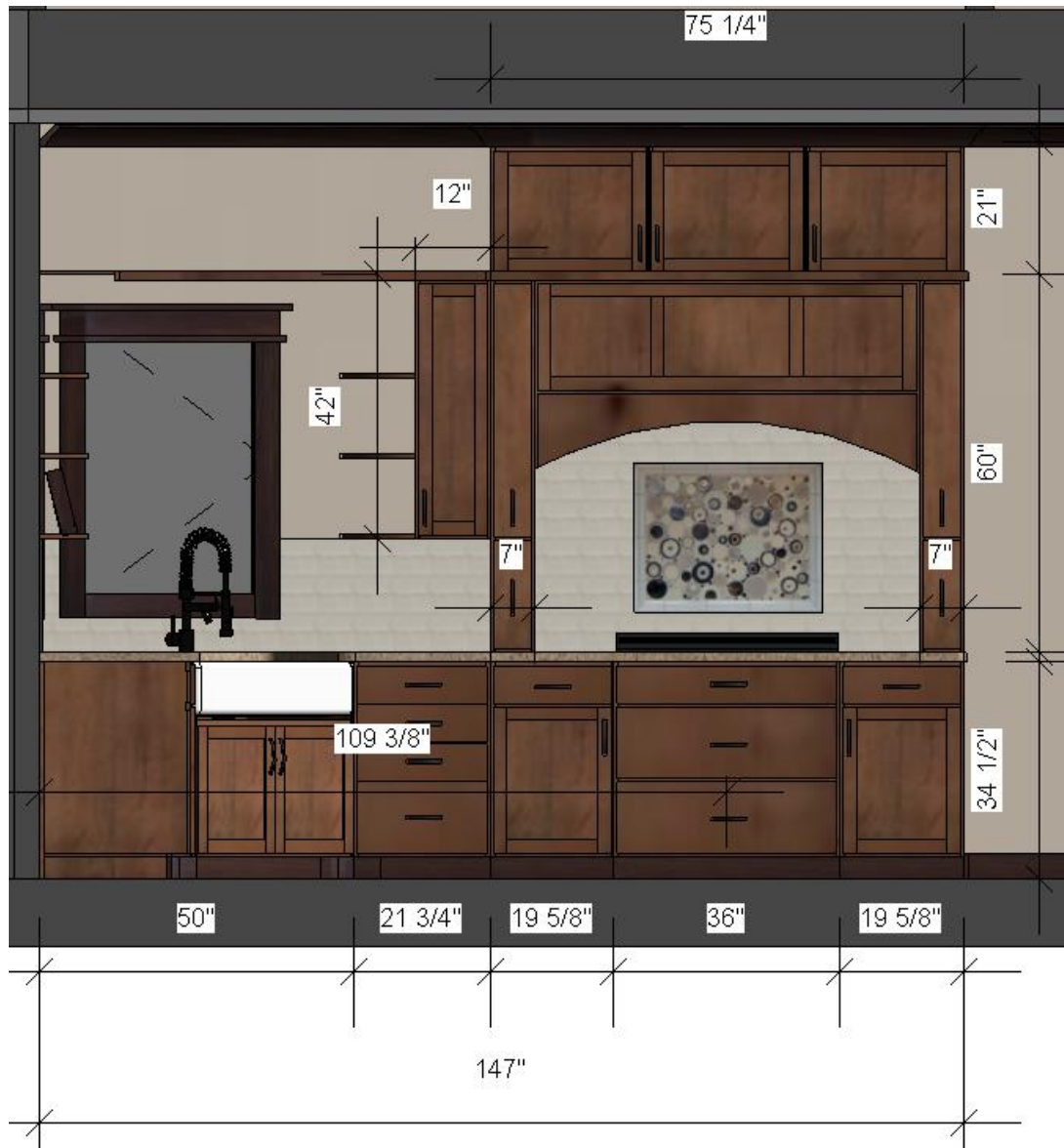
Cabinets

- Double Oven cabinet with drawer & cookie sheet holder - 31" W x 96" H x 26" D
- Raised Dishwasher cabinet with drawer & pull-out shelves - 25 1/2" W x 96" H x 26" D
- Pull-out Garbage cabinet with drawer - 21 3/4" W x 34 1/2" H x 24" D
- Cabinet over double oven cabinet - 31" W x 21" H x 26" D
- Cabinet over raised dishwasher cabinet - 25 1/2" W x 21" H x 26" D
- Upper single door cabinet - 12" W x 42" H x 12" D

Open shelves by upper cabinet & corner farmhouse sink cabinet

Beth Hodgman

Stove Top Wall



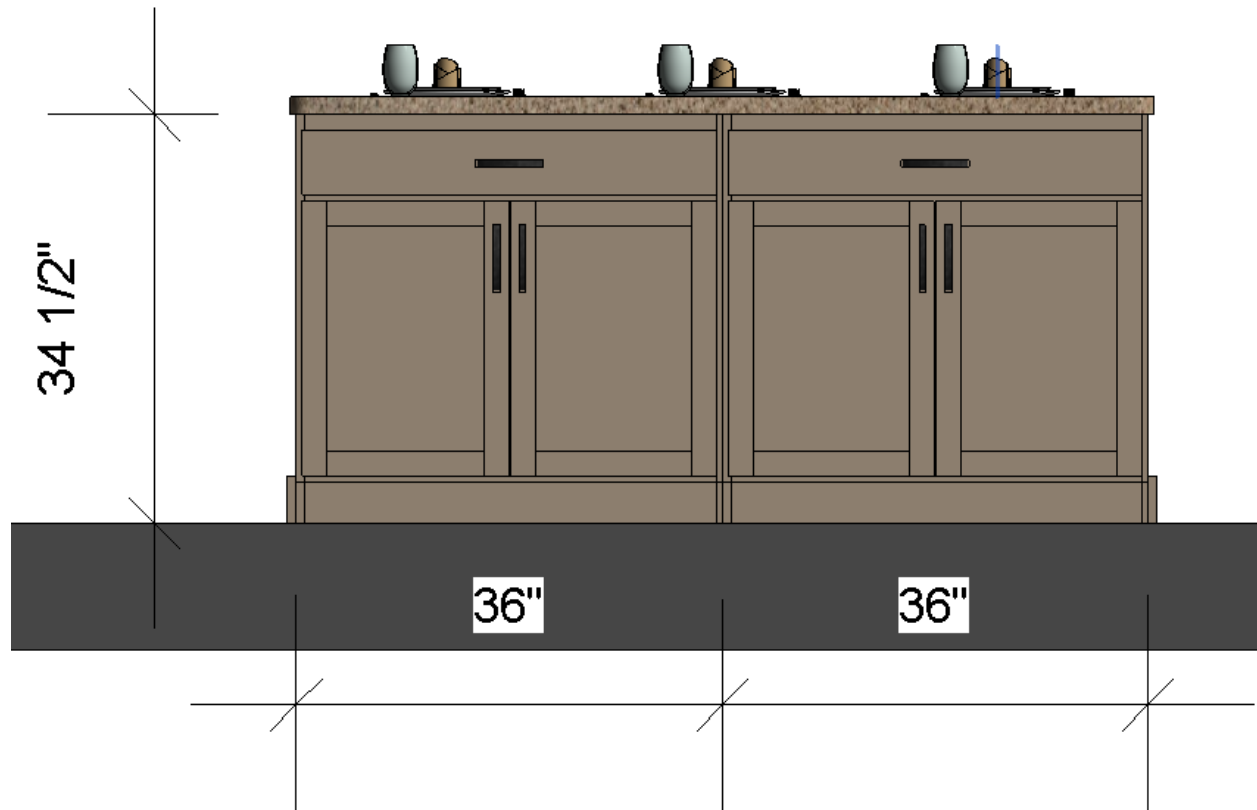
Cabinets

- Four-drawer lower cabinet - 21 3/4" W x 34 1/2" H x 24" D
- Two base cabinets with pull-out shelves - 19 5/8" W x 34 1/2" H x 24" D
- Stovetop cabinet with 2 drawers - 36" W x 34 1/2" H x 24" D
- Two cabinets on sides of stovetop with spice pull-outs - 7" W x 60" H x 24" D
- Three-door cabinet over range hood - 75 1/4" W x 21" H x 24" D
- Upper single door cabinet - 12" W x 42" H x 12" D

Open shelves by upper cabinet and range hood as shown

Beth Hodgman

Island

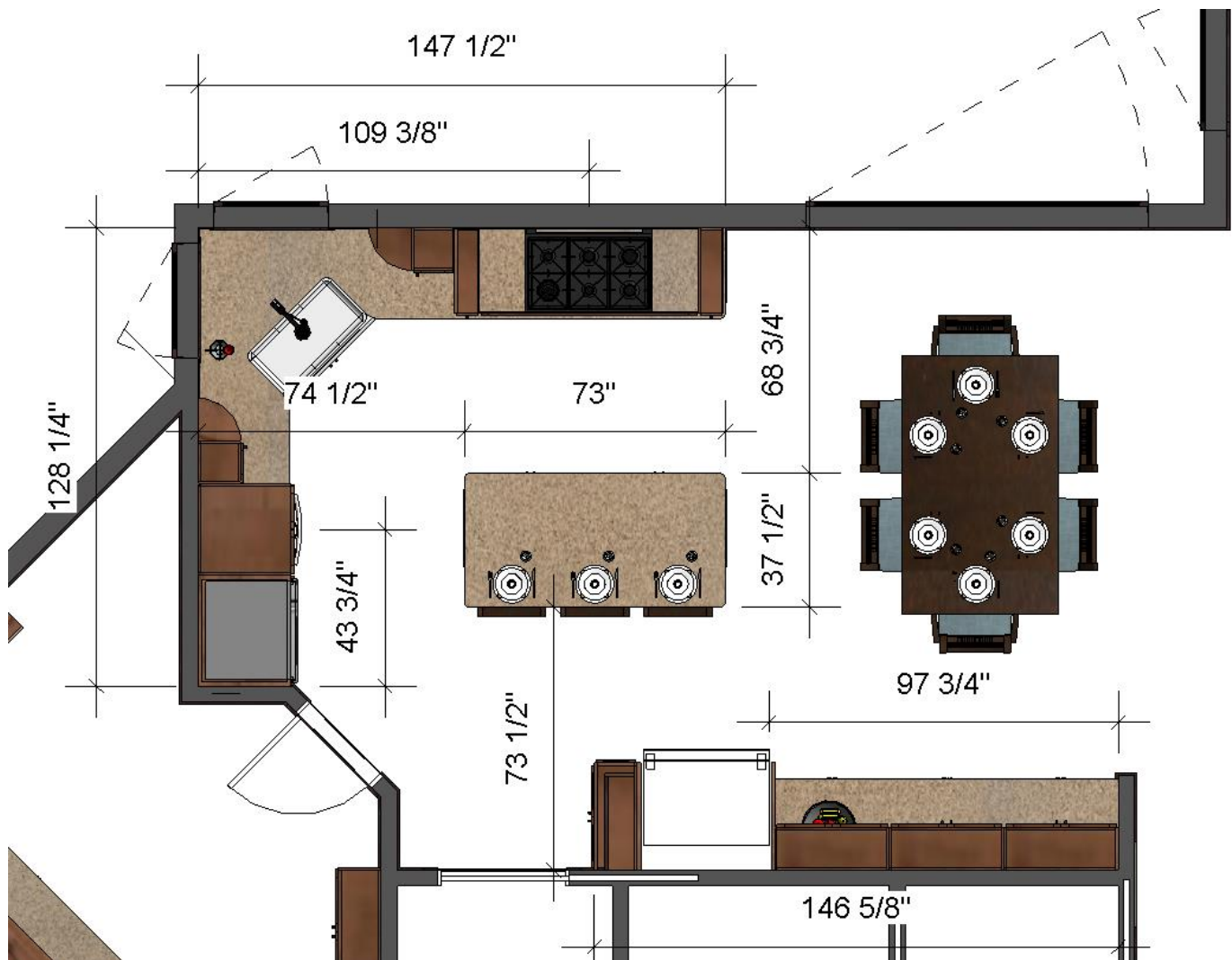


Cabinets

- Two cabinets with pull-out shelves, painted – 36" W x 34 1/2" H x 24" D

12" overhang of countertop on back side for seating

Kitchen Layout



Electrical needs

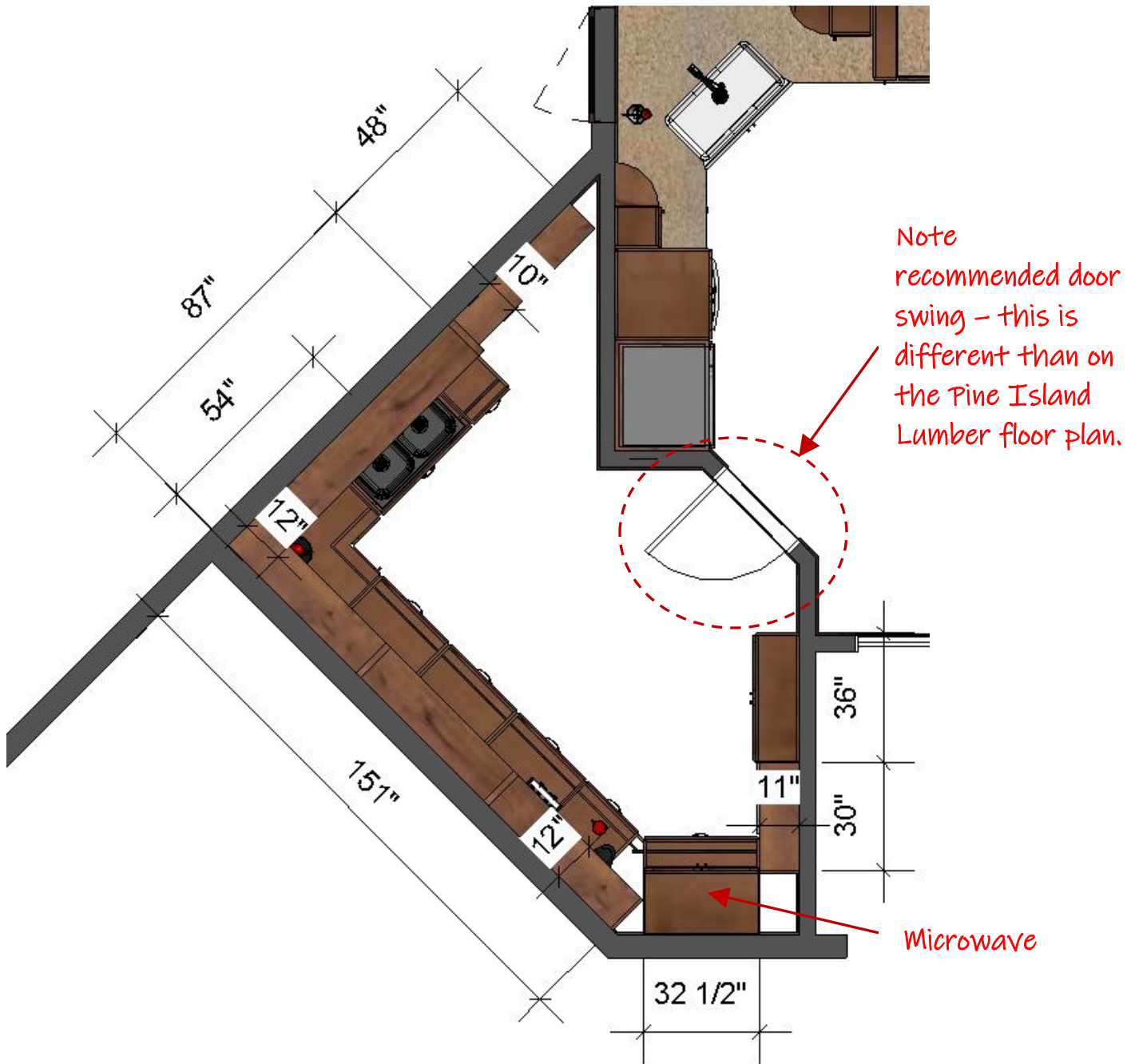
- Corner sink disposal
- Stovetop (?)
- Range Hood - outlet about 7 1/2' above floor
- Island - outlets on both sides
- Dishwasher
- Double oven (1 outlet or wire each)
- Refrigerator
- Two or three outlets along 8' counter
- Outlets on either side of sink @ counter height

Beth Hodgman



Walk-in Pantry
Renderings

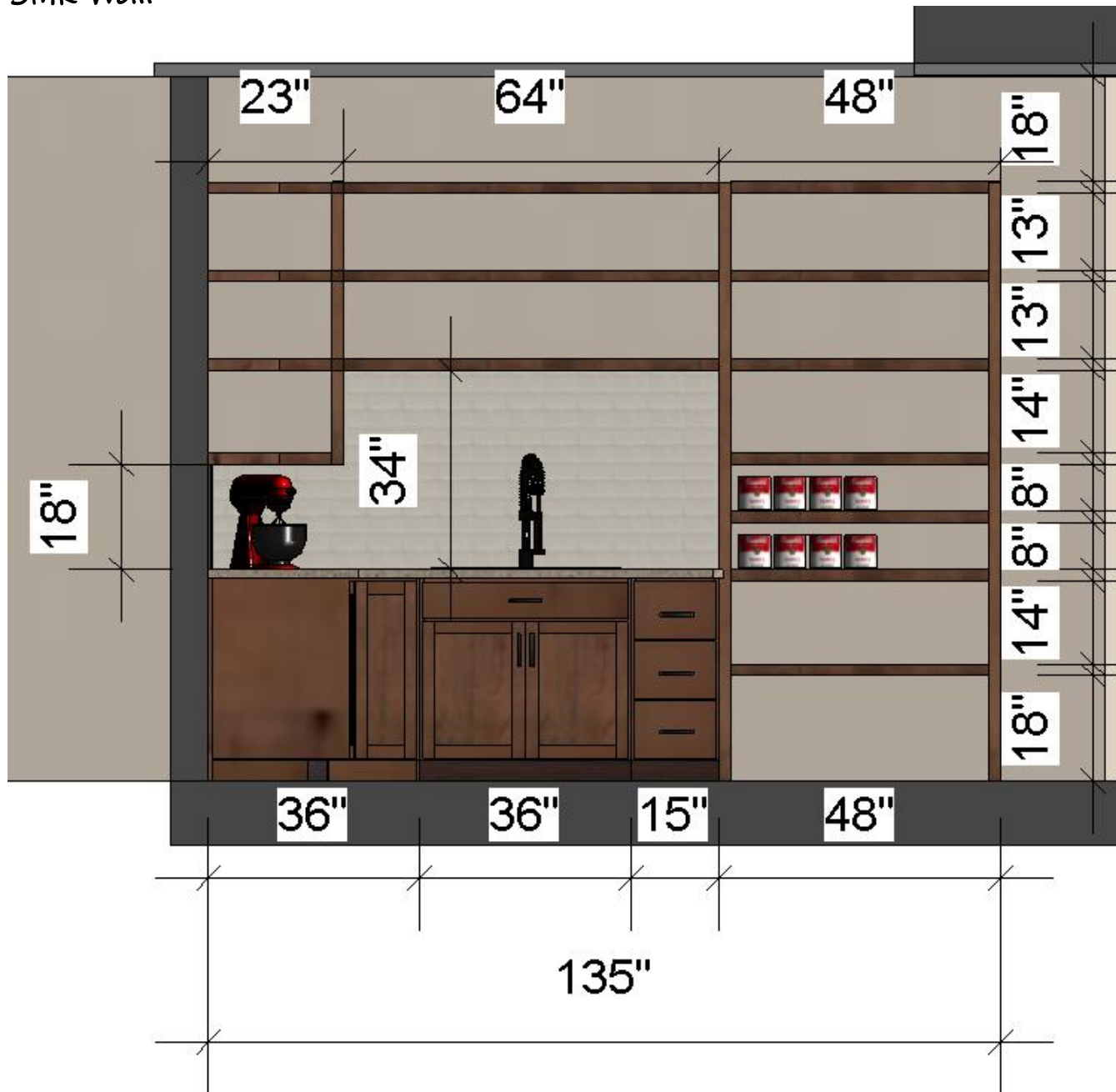
Pantry Layout (w/o countertops to show base cabinets)



Electrical needs

- Sink disposal
- Microwave
- Multiple outlets along countertops

Sink Wall

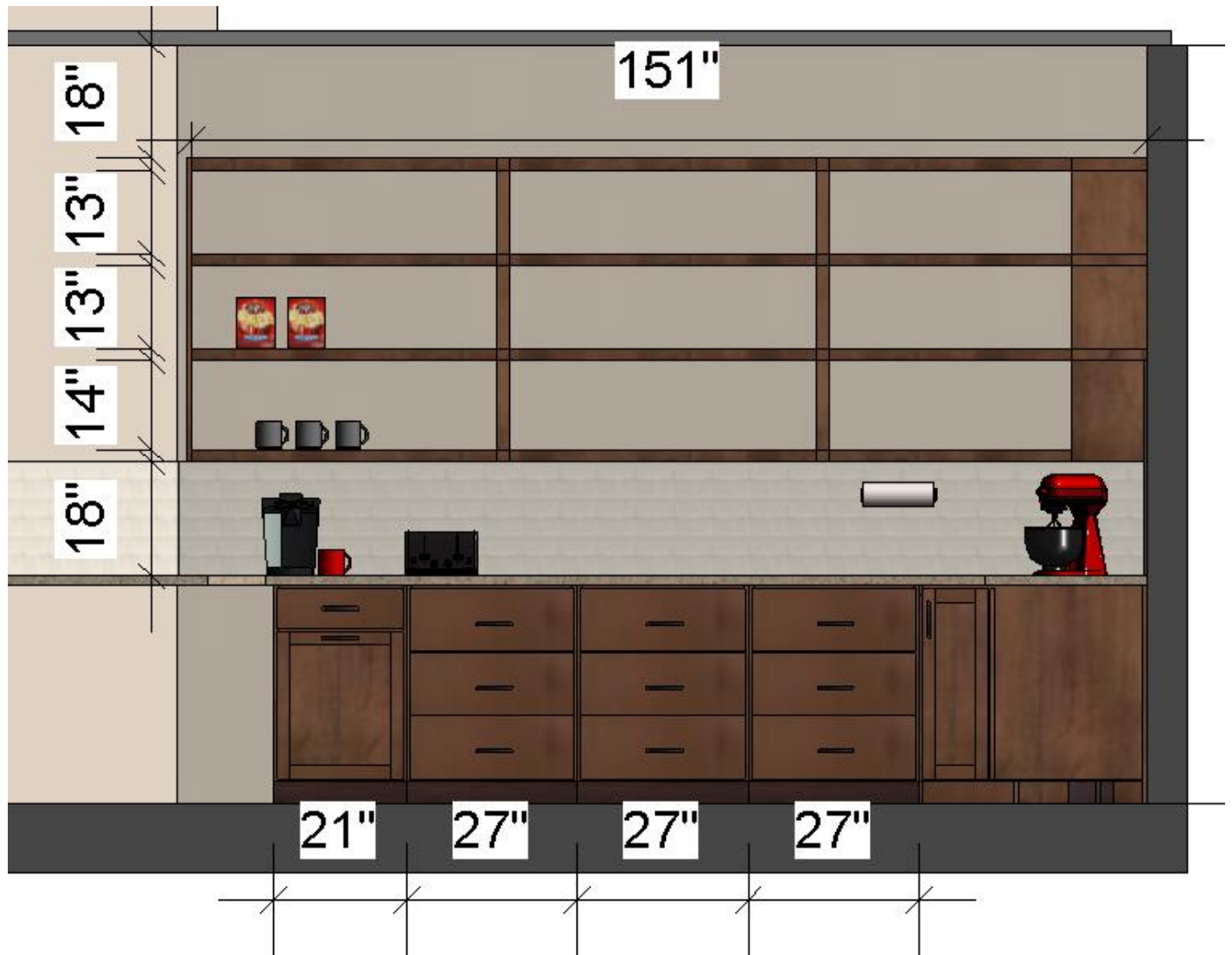


Cabinets

- Three-drawer lower cabinet - 15" W x 34 1/2" H x 24" D
- Sink cabinet - 36" W x 34 1/2" H x 24" D
- Corner cabinet - 36" W x 34 1/2" H x 36" D
- Open shelves, as shown - 48" wide section is 10" deep, rest of shelves are 12" deep - can put a recessed back in the lower part of 48" section, if needed, to hide plumbing lines to sink

Beth Hodgman

Long Wall



Cabinets

- Three three-drawer lower cabinets - 27" W x 34 1/2" H x 24" D
- Pull-out Garbage cabinet with drawer - 21" W x 34 1/2" H x 24" D
- Open shelves, as shown - 12" deep

Beth Hodgman

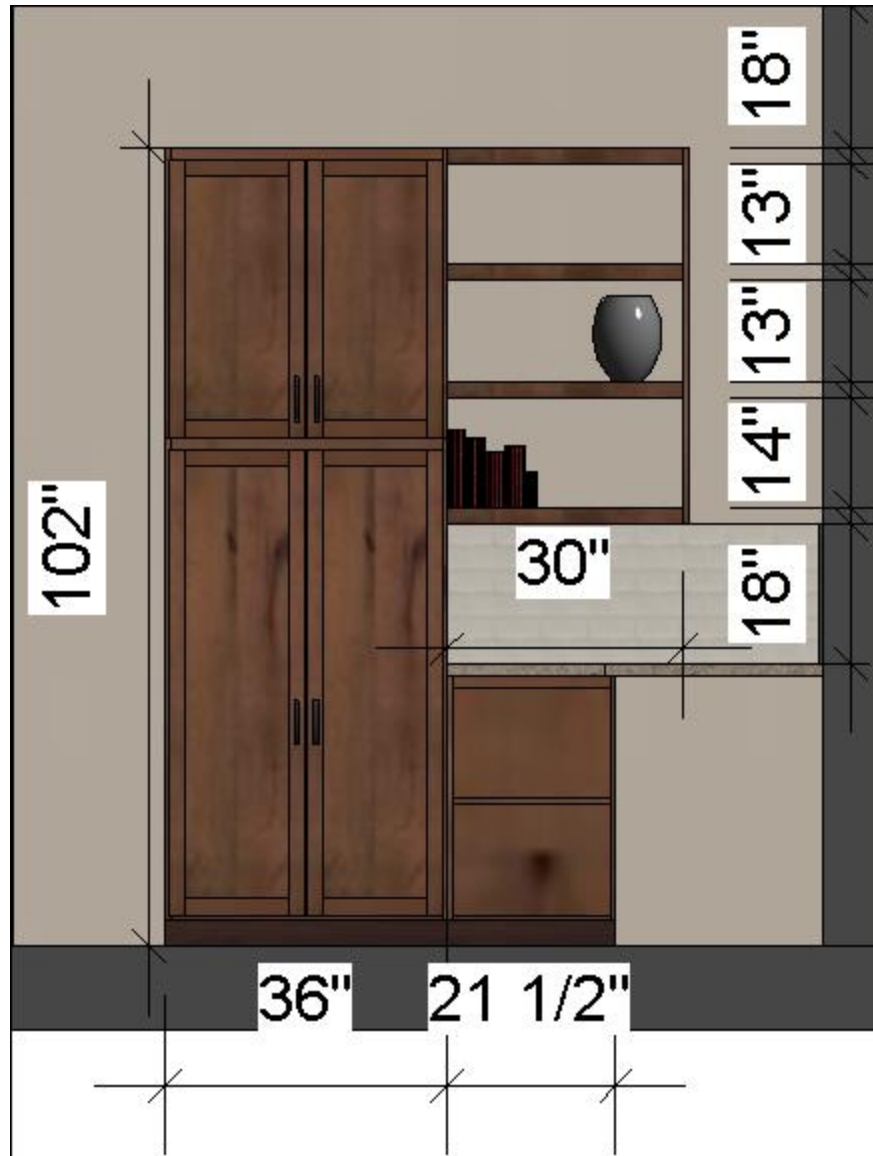
Microwave Wall



Cabinets

- Three-drawer lower cabinet - 32 1/2" W x 34 1/2" H x 26 3/8" D
- Upper microwave cabinet, with two doors - 32 1/2" W x 48" H x 18" D

"Pantry Cabinet" Wall



Cabinets

- Four-door "Pantry Cabinet" - 36" W x 102" H x 12" D
- Open shelf lower cabinet - 21 1/2" W x 34 1/2" H x 11" D
- Open shelves above, as shown