

Casey Peetz Seed Warehouse Design Specification



July 21, 2021

Casey Peetz – Badger Bluff AG Service

Table of Contents

View from road.....	3
View from Parking Lot.....	4
Backside of Building (opposite of Parking Lot).....	4
Backside of Building (end of Warehouse Space).....	5
View from Road (entire building).....	5
Office Layout.....	6
Shop Layout.....	7
Warehouse Layout.....	8
Storage Space Layout (above office area).....	9
Entire Building Footprint/Dimensions.....	10
Reception Area.....	11
Stairs in Shop.....	12
Roof Pitch, Exterior Walls, Awning & Wainscoting.....	13
Interior Ceiling Heights.....	14
Door Schedule.....	15
Window Schedule.....	15

View from road

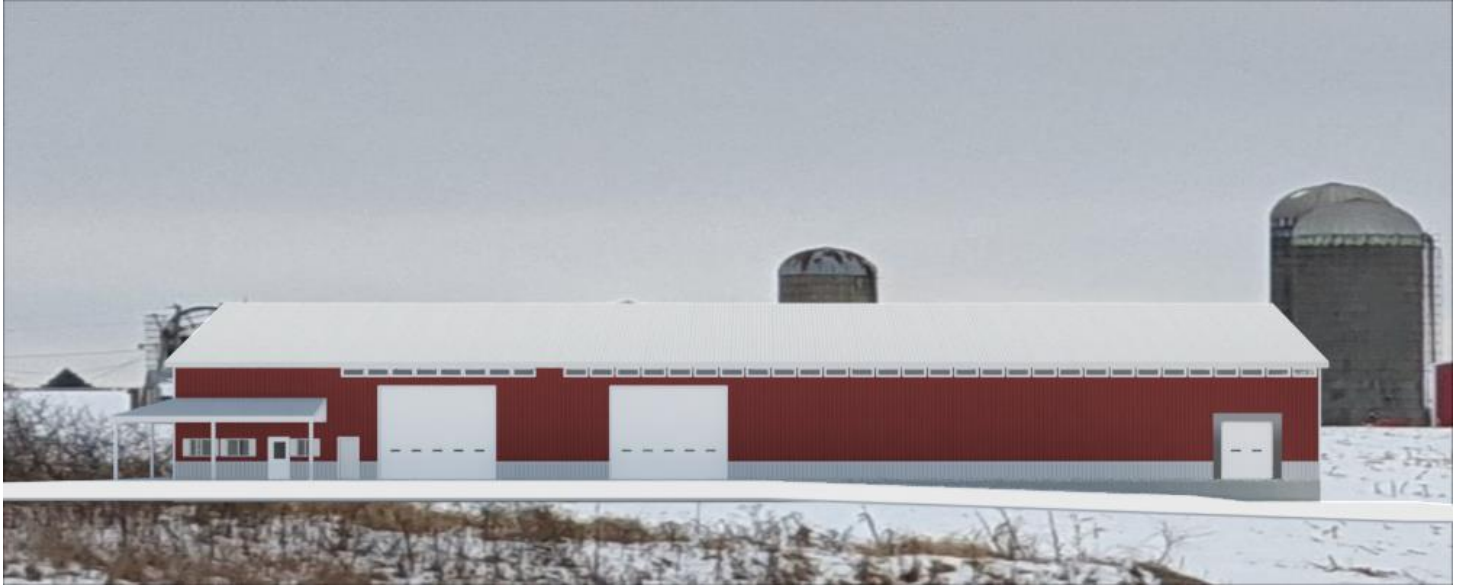


Awning Highlights

- 5/12 pitch on roof and awning
- Bottom of awning 10' up from concrete pad
- Awning extends 8' out from building

Casey Peetz – Badger Bluff AG Service

View from Parking Lot



Backside of Building (opposite of Parking Lot)



Backside of Building (end of Warehouse Space)

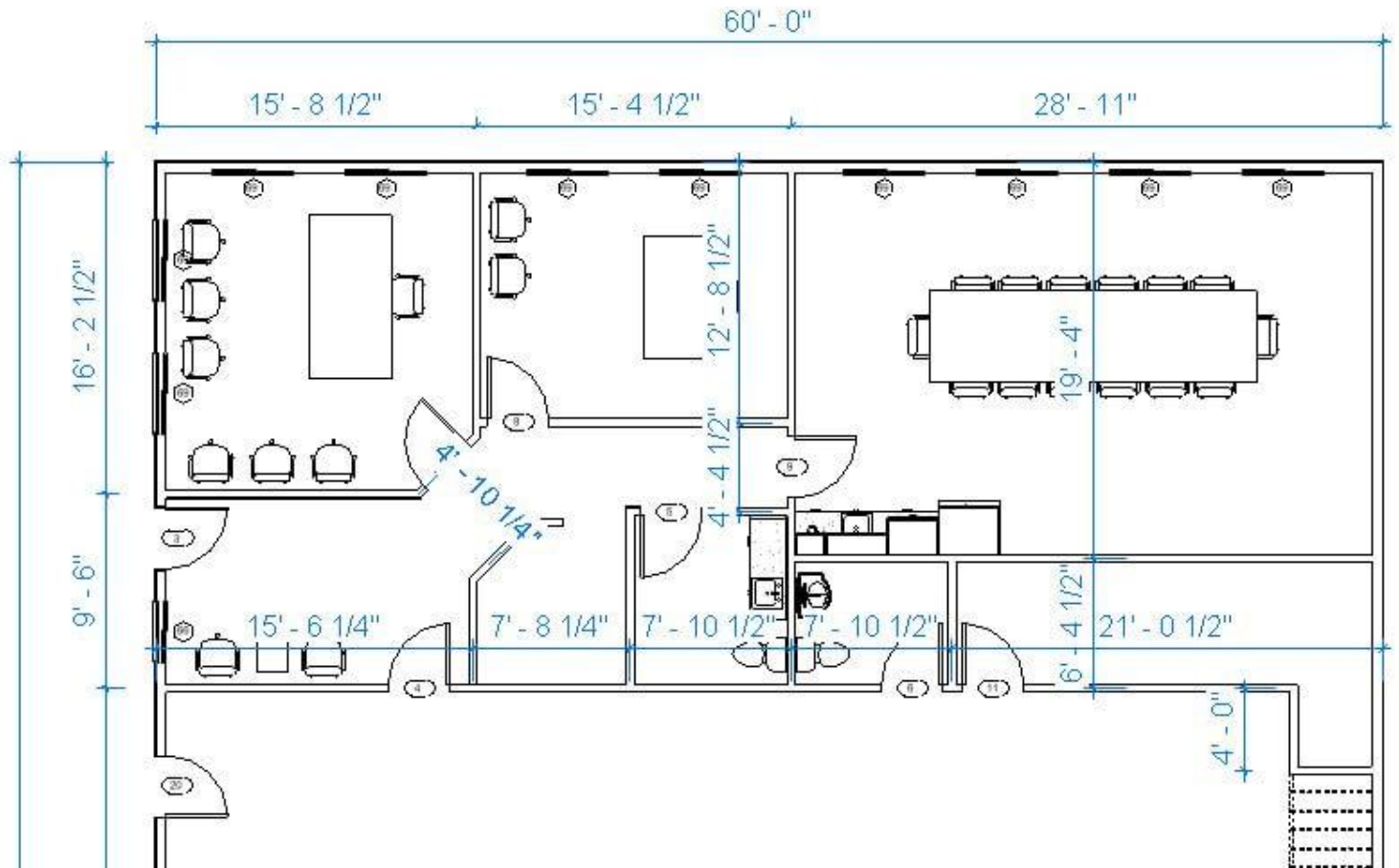


View from Road (entire building)



Casey Peetz - Badger Bluff AG Service

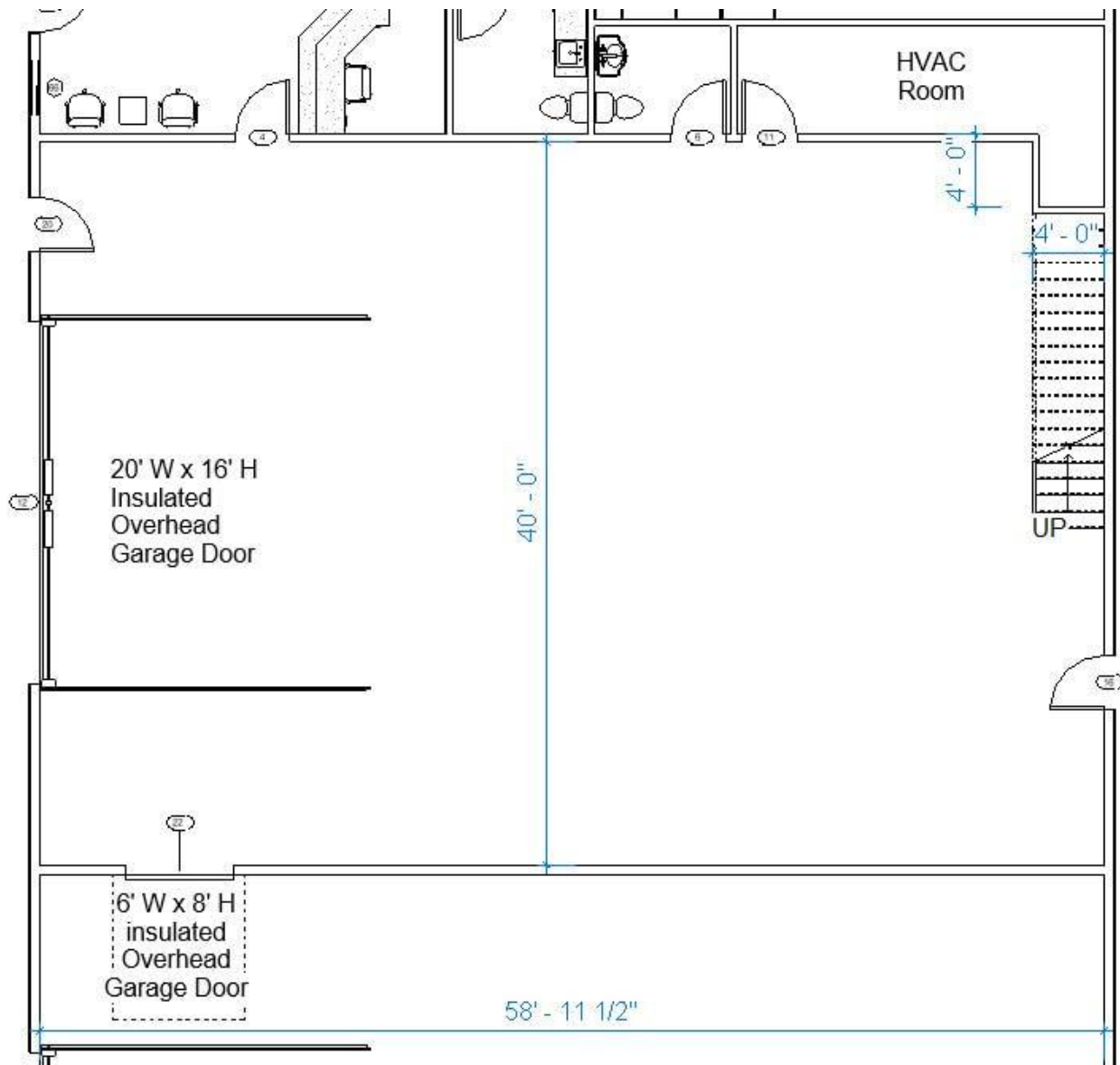
Office Layout



Highlights

- Insulated concrete slab floor with in-floor heat
- 10' ceiling with storage space above, accessible from shop

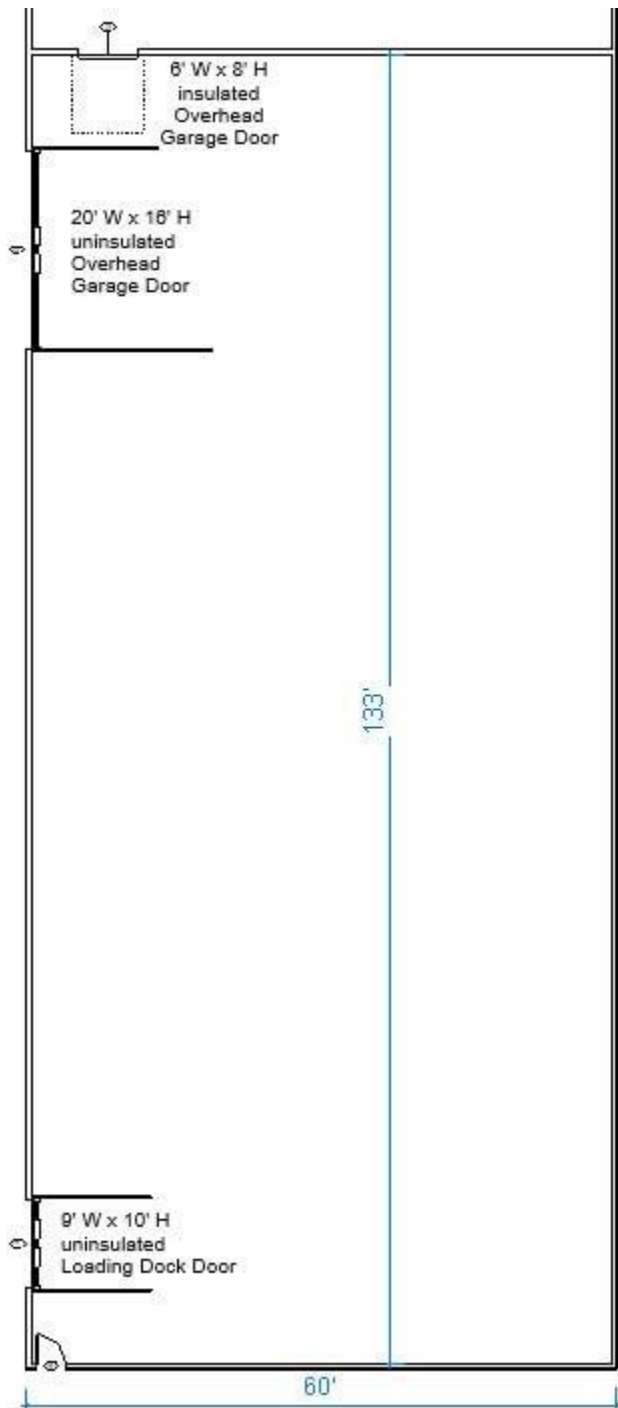
Shop Layout



Highlights

- Insulated concrete slab floor with in-floor heat
- 20' insulated ceiling

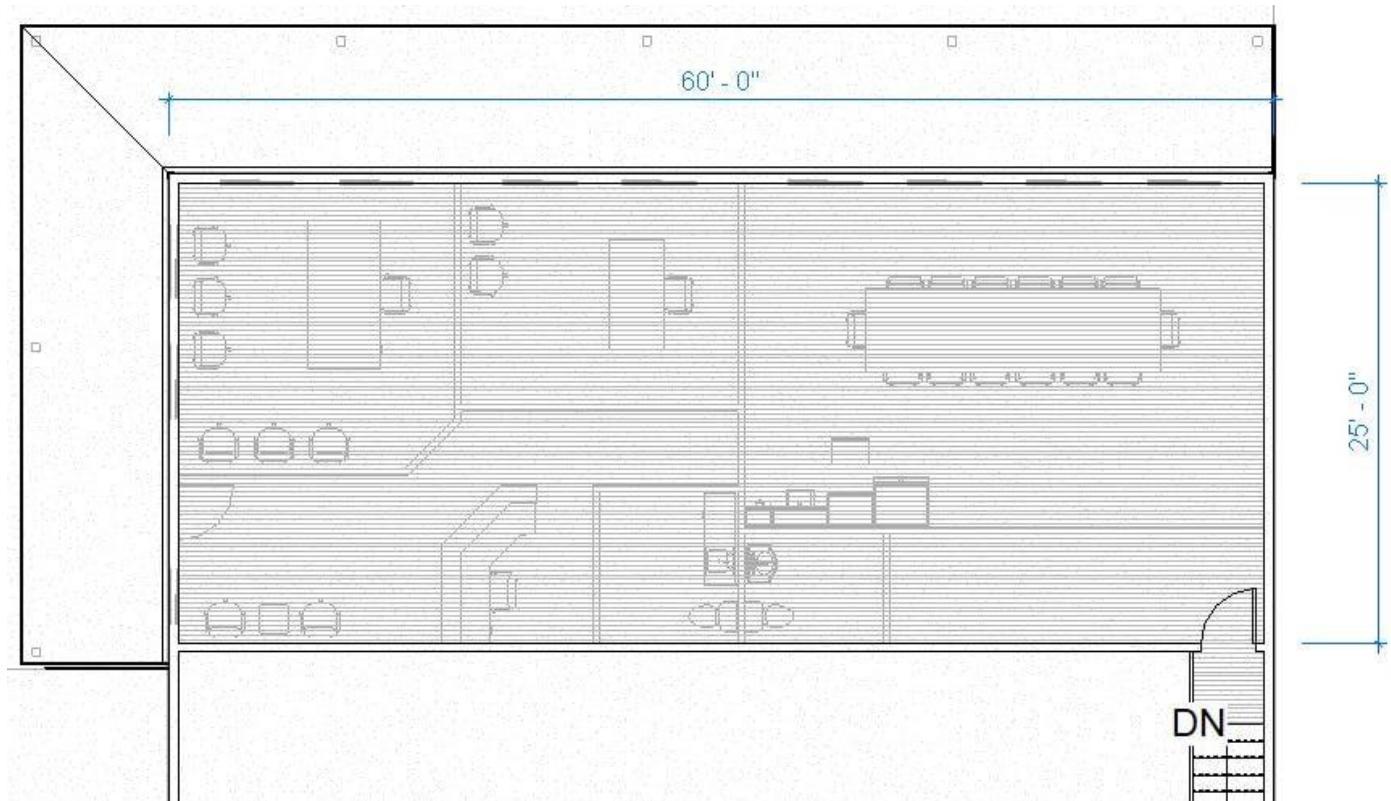
Warehouse Layout



Highlights

- Concrete slab floor
- No heat
- Not insulated
- 20' ceiling that is open to trusses

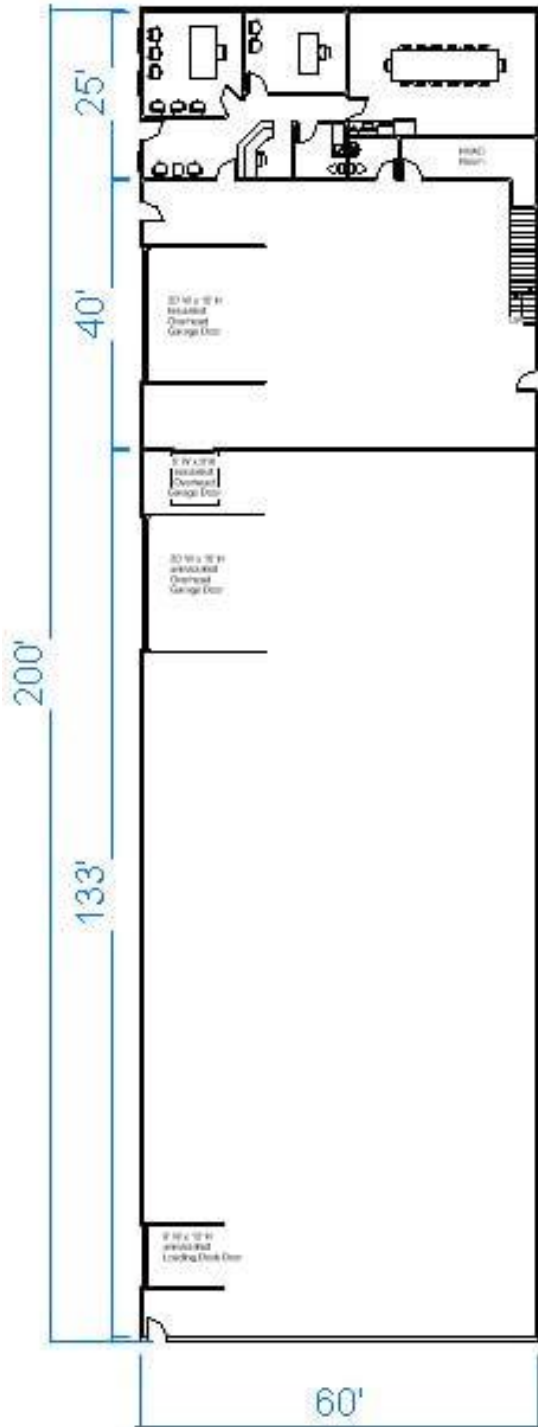
Storage Space Layout (above office area)



Highlights

- Plywood floor
- 9' insulated ceiling
- Accessible from shop via 4' wide staircase and landing

Entire Building Footprint/Dimensions



Highlights

- Outside Dimensions = 60' x 200'
- Inside Dimensions of each section:
 - Office Space = 25' wide
 - Shop Space = 40' wide
 - Warehouse Space = 133' wide

Reception Area



Highlights

- Door on right leads to shop
- Door on back wall leads to conference room
- Restroom is immediately behind reception area

Casey Peetz – Badger Bluff AG Service

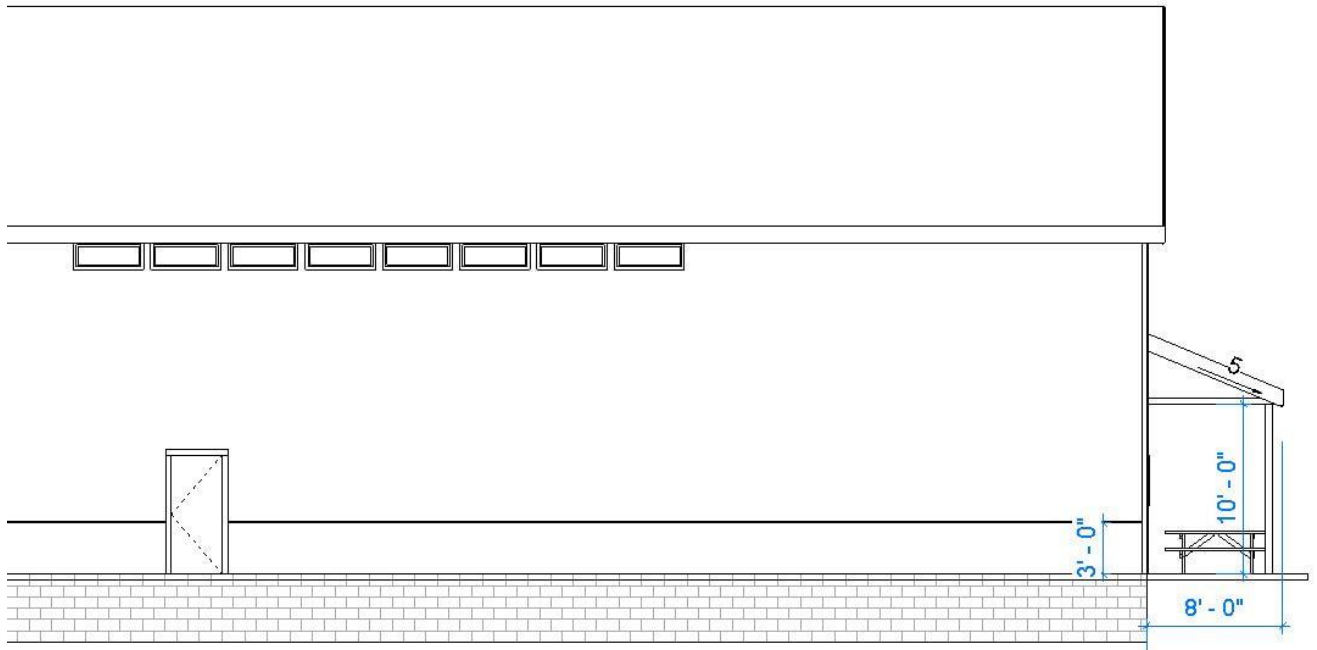
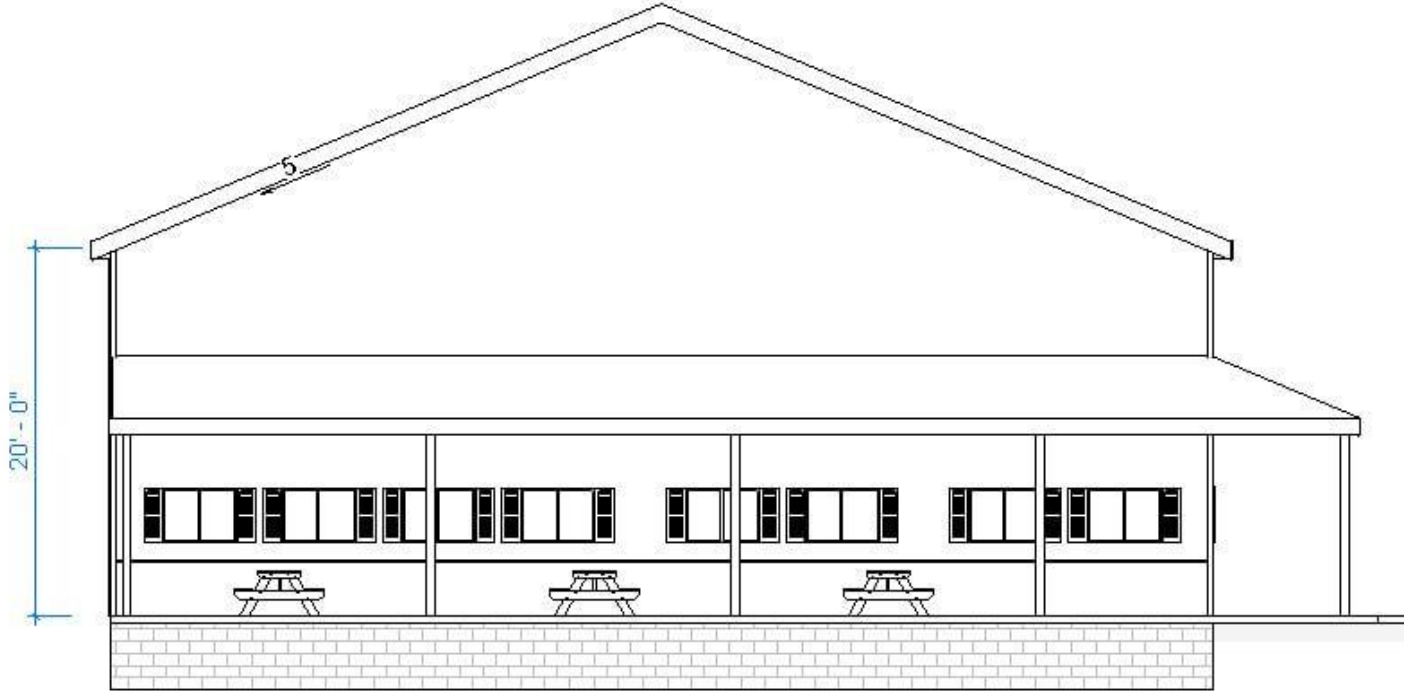
Stairs in Shop



Highlights

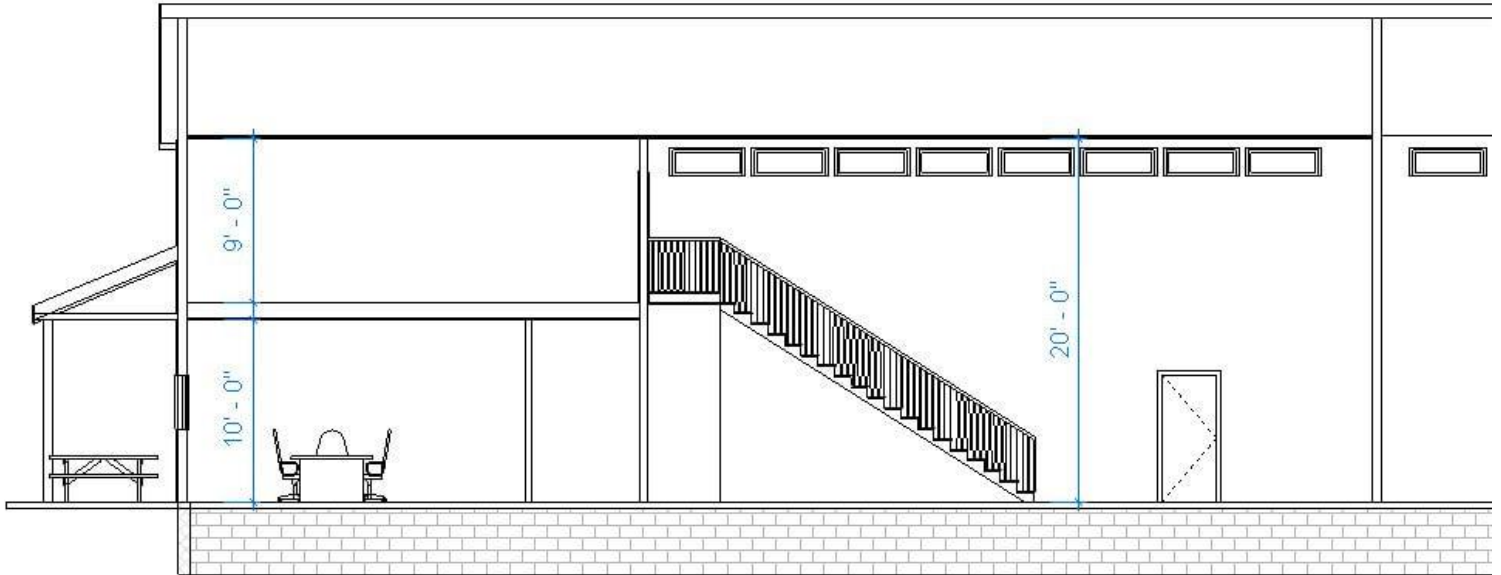
- Stairs lead to storage space above offices
- Door on back wall leads outside

Roof Pitch, Exterior Walls, Awning & Wainscoting



Casey Peetz - Badger Bluff AG Service

Interior Ceiling Heights



Warehouse ceiling is open to trusses

Door Schedule

Door Number	Door Size	Comments	Location
3	36" x 84"	Exterior, with half glass	Office (Entrance)
4	36" x 84"	Interior, slab door	Office into Shop
5	36" x 84"	Interior, slab door	Office (Bathroom)
6	36" x 84"	Interior, slab door	Shop (Bathroom)
7	36" x 84"	Interior, slab door	Office (Larger Office)
8	36" x 84"	Interior, slab door	Office (Smaller Office)
9	36" x 84"	Interior, slab door	Office (Conference Room)
10	36" x 84"	Interior, slab door	Shop into Storage Area
11	36" x 84"	Interior, slab door	Shop into HVAC Room
12	20' x 16'	Overhead, insulated	Shop
13	20' x 16'	Overhead, non-insulated	Warehouse
14	9' x 10'	Loading Dock	Warehouse
16	36" x 84"	Exterior, slab door, insulated	Shop
18	36" x 84"	Exterior, slab door, non-insulated	Warehouse
20	36" x 84"	Exterior, slab door, insulated	Shop
22	72" x 96"	Overhead, insulated	Shop into Warehouse

Window Schedule

Count	Width	Height	Comments	Location
1	36"	36"	Horizontal slider window	Reception Area
10	48"	36"	Horizontal slider window	Offices and Conference Room
16	48"	18"	Transom, insulated pane	Shop
75	48"	18"	Transom, single pane	Warehouse